

SKYLINE[®]

FASCIA SOFFIT COPINGS

SKYLINE PROFILES - FASCIA AND SOFFIT

January 2020



ALUMASC[®]

WATER MANAGEMENT SOLUTIONS



Introduction	2
Skyline & Rainwater Overview	4 - 5
Colour Options	6 - 7
Fascia SF1	8 - 9
Fascia SF2	10 - 11
Fascia SF3	12 - 13
Fascia SF4	14 - 15
Fascia SF5	16 - 17
Fascia SF6	18 - 19
Fascia SF7	20 - 21
Fascia SAFE02	22 - 23
Soffit SOF0	24 - 25
Soffit SOF4	26 - 27
Soffit SOF7	28 - 29



Alumasc Overview

Alumasc is a UK-based supplier of premium building products. The majority of the group's business is in the area of sustainable building products which enable customers to manage energy and water use in the built environment.

Alumasc Water Management Solutions provide 'Rain to Drain' solutions, that set the standard for urban water management. They include: Skyline Fascias, Soffit & Copings; Alumasc Rainwater Gutters & Downpipes; Harmer Building Drainage; Wade Building Drainage & Gatic Civil Drainage & Access Covers.

Under the AWMS banner, customers benefit from rainwater and drainage products that capture, retain and control the flow of rainwater in the most effective way inside and outside buildings.



Fascia



Skyline fascia and soffit components are designed to be used in conjunction with Alumasc's aluminium rainwater systems, in particular the GX range of folded aluminium gutters, providing a complete eaves and roof drainage solution.

The range suits both contemporary and traditional architecture. It's designed to meet industry standards and exceeds expectations in design, durability and performance. Easy to install, with 25 years life expectancy and 100% recyclable, it is the ideal solution for roofing and gutter interfaces.

Skyline Fascia is available in four generic shapes with top of the range roof edge details to suit all designs to suit all designs and budgets. Additionally the skyline soffit is designed to work on overhanging soffits and canopies or as part of a skyline fascia system.

Standard and fully bespoke designs are available in BBA certified powder-coated process aluminium to my RAL or BSS colour to suit your project.

Soffit



Colour Options

Choice of Colour

The standard aluminium Raincote range comprises 26 colours. Additional colours with a BS or RAL number are available to special order, subject to quantity and cost (see below for details).

The colours reproduced on this page are for general guidance only.

Please contact Alumasc Marketing team for further information on colour choice and samples.

In-House Powder Coatings

The aluminium undergoes a series of pre-treatments to provide the ideal prepared surface to receive an electrostatically applied polyester powder in the chosen colour. This is then 'baked' and bonded to the fitting in a carefully controlled oven; the complete process is achieved on a continuous line to obtain the best results. The performance of polyester powder coated rainwater systems greatly exceeds that of site painted systems.

Approvals & Quality Control

Polyester powder coating is in accordance with BS EN 12206-1. This refers to the coating of aluminium and aluminium alloys for architectural purposes. In the case of rainwater systems it is accepted that such coating is both decorative and protective. Alumasc systems will certainly be finished to this standard, and will in most cases exceed it.

Along with independent auditing to the ISO 9001 Quality Management Standard, Alumasc maintains BBA certification for the powder coating process of its aluminium rainwater goods in respect of longevity of performance and colour fastness - British Board of Agrément Certificate No. 86/1671.

Non standard colours - Aluminium

The main bulk of the non standard colours requested are often already on the system and have been previously supplied, therefore we may have a quantity of powder left in stock.

The reason for introducing surcharges is the downtime and lack of productivity experienced at the paint line when having to rotate numerous colours with little sales value. The surcharges are not due to the colours being outside of our standard range, there is little difference in cost between our standard colours and ones outside of our range, but to allow us to recover the costs incurred for colour changes.

- Orders for colours outside of our standard range that have previously been used and have a sales value below £1,000 list will incur a £100 list surcharge.
- Orders for colours outside of our standard range that have previously been used and have a sales value above £1,000 list will not be charged.

The only exception to the above surcharges are:

- Additional material to complete a project (must be backed up by previous order number(s))
- An AWMS error - the charges cannot be passed to the customer
- Commercial decision made by the Commercial Director

Marine coating will incur a £200 list surcharge - this is regardless of the order size / value.

Alumasc's Skyline and Rainwater products are available in plain mill finish or polyester powder coated using the Raincote range on a BBA approved process. The standard aluminium RAL colour range includes 26 colours to choose from.

The standard range of colours are produced with a 30% gloss unless otherwise stated. We have our own state of the art in house powder coating plant, so we can offer any additional BS or RAL colour.



RAL 1011m Brown Beige

RAL 1013m Pearl White

RAL 1021m Cadmium Yellow

RAL 2002m Vermilion

RAL 3003m Ruby Red

RAL 3005m Wine Red

RAL 5003m Sapphire Blue

RAL 5010m Flower Blue

RAL 6005m Moss Gn

RAL 6018m Yellow Gn

RAL 7005m Mouse Grey

RAL 7006m Beige Grey

RAL 7012m Basalt Grey *

RAL 7015m Slate Grey *

RAL 7016m Anthracite Grey *

RAL 7024m Graphite Grey *

RAL 7036m Platinum Grey

RAL 7037m Dusty Grey

RAL 7038m Agate Grey *

RAL 8017m Chocolate Brown

RAL 8019m Grey brown

RAL 9006m Metallic Silver

RAL 9006g Metallic Silver (80% Gloss)

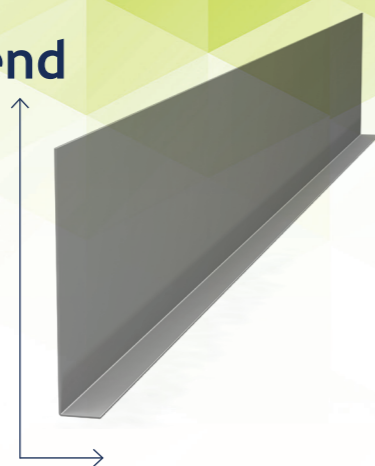
RAL 9016m White *

RAL 9017m Black (60% Gloss)

Textured Black

*Also available in textured finish

Fascia Profile - SF1 - 1 Bend



Please note that the girth is the entire width of the aluminium including all bends. Images shown are indicative only.

3000mm Length Inc Union

Code PPC	Description
SF1/200/3MPPC	Fascia, 1 Bend, 0-200mm, 3000mm Length
SF1/300/3MPPC	Fascia, 1 Bend, 200-300mm, 3000mm Length
SF1/400/3MPPC	Fascia, 1 Bend, 300-400mm, 3000mm Length
SF1/500/3MPPC	Fascia, 1 Bend, 400-500mm, 3000mm Length
SF1/600/3MPPC	Fascia, 1 Bend, 500-600mm, 3000mm Length
SF1/700/3MPPC	Fascia, 1 Bend, 600-700mm, 3000mm Length
SF1/800/3MPPC	Fascia, 1 Bend, 700-800mm, 3000mm Length
SF1/900/3MPPC	Fascia, 1 Bend, 800-900mm, 3000mm Length
SF1/1000/3MPPC	Fascia, 1 Bend, 900-1000mm, 3000mm Length

Loose Union

Code PPC	Description
SF1/200/UCPPC	Fascia, 1 Bend, 0-200mm, Union Clip
SF1/300/UCPPC	Fascia, 1 Bend, 200-300mm, Union Clip
SF1/400/UCPPC	Fascia, 1 Bend, 300-400mm, Union Clip
SF1/500/UCPPC	Fascia, 1 Bend, 400-500mm, Union Clip
SF1/600/UCPPC	Fascia, 1 Bend, 500-600mm, Union Clip
SF1/700/UCPPC	Fascia, 1 Bend, 600-700mm, Union Clip
SF1/800/UCPPC	Fascia, 1 Bend, 700-800mm, Union Clip
SF1/900/UCPPC	Fascia, 1 Bend, 800-900mm, Union Clip
SF1/1000/UCPPC	Fascia, 1 Bend, 900-1000mm, Union Clip

Fascia Corner - SF1 (External/Internal) Angle TBC at point of order

Code PPC	Description
SF1/200/EXTPPC	Fascia External Corner, 1 Bend, 0-200mm
SF1/300/EXTPPC	Fascia External Corner, 1 Bend, 200-300mm

SF1/400/EXTPPC	Fascia External Corner, 1 Bend, 300-400mm
SF1/500/EXTPPC	Fascia External Corner, 1 Bend, 400-500mm
SF1/600/EXTPPC	Fascia External Corner, 1 Bend, 500-600mm
SF1/700/EXTPPC	Fascia External Corner, 1 Bend, 600-700mm
SF1/800/EXTPPC	Fascia External Corner, 1 Bend, 700-800mm
SF1/900/EXTPPC	Fascia External Corner, 1 Bend, 800-900mm
SF1/1000/EXTPPC	Fascia External Corner, 1 Bend, 900-1000mm
SF1/200/INTPPC	Fascia Internal Corner, 1 Bend, 0-200mm
SF1/300/INTPPC	Fascia Internal Corner, 1 Bend, 200-300mm
SF1/400/INTPPC	Fascia Internal Corner, 1 Bend, 300-400mm
SF1/500/INTPPC	Fascia Internal Corner, 1 Bend, 400-500mm
SF1/600/INTPPC	Fascia Internal Corner, 1 Bend, 500-600mm
SF1/700/INTPPC	Fascia Internal Corner, 1 Bend, 600-700mm
SF1/800/INTPPC	Fascia Internal Corner, 1 Bend, 700-800mm
SF1/900/INTPPC	Fascia Internal Corner, 1 Bend, 800-900mm
SF1/1000/INTPPC	Fascia Internal Corner, 1 Bend, 900-1000mm

Stop End

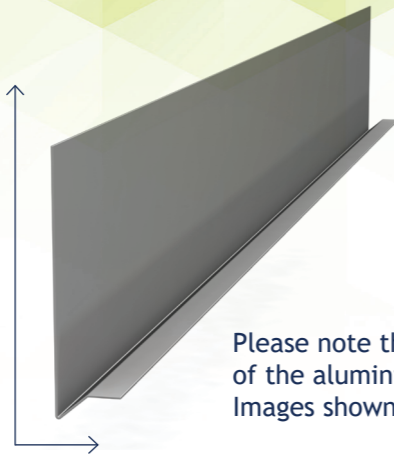
Code PPC	Description
FSC/200/SENDPPC	Fascia Stop End, 0-200mm
FSC/300/SENDPPC	Fascia Stop End, 200-300mm
FSC/400/SENDPPC	Fascia Stop End, 300-400mm
FSC/500/SENDPPC	Fascia Stop End, 400-500mm
FSC/600/SENDPPC	Fascia Stop End, 500-600mm
FSC/700/SENDPPC	Fascia Stop End, 600-700mm
FSC/800/SENDPPC	Fascia Stop End, 700-800mm
FSC/900/SENDPPC	Fascia Stop End, 800-900mm
FSC/1000/SENDPPC	Fascia Stop End, 900-1000mm

Apex/Raking Angles

Code PPC	Description
SF1/200/APAPPC	Fascia Apex, 1 Bnd, 0-200mm
SF1/300/APAPPC	Fascia Apex, 1 Bnd, 200-300mm
SF1/400/APAPPC	Fascia Apex, 1 Bnd, 300-400mm
SF1/500/APAPPC	Fascia Apex, 1 Bnd, 400-500mm
SF1/600/APAPPC	Fascia Apex, 1 Bnd, 500-600mm
SF1/700/APAPPC	Fascia Apex, 1 Bnd, 600-700mm
SF1/800/APAPPC	Fascia Apex, 1 Bnd, 700-800mm
SF1/900/APAPPC	Fascia Apex, 1 Bnd, 800-900mm
SF1/1000/APAPPC	Fascia Apex, 1 Bnd, 900-1000mm

At 90° this covers for anything up to a 45° pitched roof (this is based on the item having a 100mm internal leg length)

Fascia Profile - SF2 - 2 Bends



Please note that the girth is the entire width of the aluminium including all bends. Images shown are indicative only.

3000mm Length Inc Union

Code PPC	Description
SF2/200/3MPPC	Fascia, 2 Bend, 0-200mm, 3000mm length
SF2/300/3MPPC	Fascia, 2 Bend, 200-300mm, 3000mm length
SF2/400/3MPPC	Fascia, 2 Bend, 300-400mm, 3000mm length
SF2/500/3MPPC	Fascia, 2 Bend, 400-500mm, 3000mm length
SF2/600/3MPPC	Fascia, 2 Bend, 500-600mm, 3000mm length
SF2/700/3MPPC	Fascia, 2 Bend, 600-700mm, 3000mm length
SF2/800/3MPPC	Fascia, 2 Bend, 700-800mm, 3000mm length
SF2/900/3MPPC	Fascia, 2 Bend, 800-900mm, 3000mm length
SF2/1000/3MPPC	Fascia, 2 Bend, 900-1000mm, 3000mm length

Loose Union

Code PPC	Description
SF2/200/UCPPC	Fascia, 2 Bend, 0-200mm, Union Clip
SF2/300/UCPPC	Fascia, 2 Bend, 200-300mm, Union Clip
SF2/400/UCPPC	Fascia, 2 Bend, 300-400mm, Union Clip
SF2/500/UCPPC	Fascia, 2 Bend, 400-500mm, Union Clip
SF2/600/UCPPC	Fascia, 2 Bend, 500-600mm, Union Clip
SF2/700/UCPPC	Fascia, 2 Bend, 600-700mm, Union Clip
SF2/800/UCPPC	Fascia, 2 Bend, 700-800mm, Union Clip
SF2/900/UCPPC	Fascia, 2 Bend, 800-900mm, Union Clip
SF2/1000/UCPPC	Fascia, 2 Bend, 900-1000mm, Union Clip

Fascia Corner - SF2 (External/Internal) Angle TBC at point of order

Code PPC	Description
SF2/200/EXTPPC	Fascia External Corner, 2 Bend, 0-200mm

SF2/300/EXTPPC	Fascia External Corner, 2 Bend, 200-300mm
SF2/400/EXTPPC	Fascia External Corner, 2 Bend, 300-400mm
SF2/500/EXTPPC	Fascia External Corner, 2 Bend, 400-500mm
SF2/600/EXTPPC	Fascia External Corner, 2 Bend, 500-600mm
SF2/700/EXTPPC	Fascia External Corner, 2 Bend, 600-700mm
SF2/800/EXTPPC	Fascia External Corner, 2 Bend, 700-800mm
SF2/900/EXTPPC	Fascia External Corner, 2 Bend, 800-900mm
SF2/1000/EXTPPC	Fascia External Corner, 2 Bend, 900-1000mm
SF2/200/INTPPC	Fascia Internal Corner, 2 Bend, 0-200mm
SF2/300/INTPPC	Fascia Internal Corner, 2 Bend, 200-300mm
SF2/400/INTPPC	Fascia Internal Corner, 2 Bend, 300-400mm
SF2/500/INTPPC	Fascia Internal Corner, 2 Bend, 400-500mm
SF2/600/INTPPC	Fascia Internal Corner, 2 Bend, 500-600mm
SF2/700/INTPPC	Fascia Internal Corner, 2 Bend, 600-700mm
SF2/800/INTPPC	Fascia Internal Corner, 2 Bend, 700-800mm
SF2/900/INTPPC	Fascia Internal Corner, 2 Bend, 800-900mm
SF2/1000/INTPPC	Fascia Internal Corner, 2 Bend, 900-1000mm

Stop End

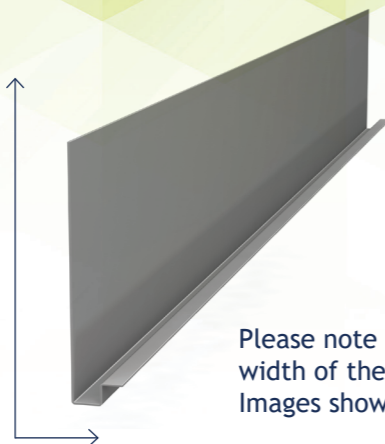
Code PPC	Description
FSC/200/SENDPPC	Fascia Stop End, 0-200mm
FSC/300/SENDPPC	Fascia Stop End, 200-300mm
FSC/400/SENDPPC	Fascia Stop End, 300-400mm
FSC/500/SENDPPC	Fascia Stop End, 400-500mm
FSC/600/SENDPPC	Fascia Stop End, 500-600mm
FSC/700/SENDPPC	Fascia Stop End, 600-700mm
FSC/800/SENDPPC	Fascia Stop End, 700-800mm
FSC/900/SENDPPC	Fascia Stop End, 800-900mm
FSC/1000/SENDPPC	Fascia Stop End, 900-1000mm

Apex/Raking Angles

Code PPC	Description
SF2/200/APAPPC	Fascia Apex, 2 Bnd, 0-200mm
SF2/300/APAPPC	Fascia Apex, 2 Bnd, 200-300mm
SF2/400/APAPPC	Fascia Apex, 2 Bnd, 300-400mm
SF2/500/APAPPC	Fascia Apex, 2 Bnd, 400-500mm
SF2/600/APAPPC	Fascia Apex, 2 Bnd, 500-600mm
SF2/700/APAPPC	Fascia Apex, 2 Bnd, 600-700mm
SF2/800/APAPPC	Fascia Apex, 2 Bnd, 700-800mm
SF2/900/APAPPC	Fascia Apex, 2 Bnd, 800-900mm
SF2/1000/APAPPC	Fascia Apex, 2 Bnd, 900-1000mm

At 90° this covers for anything up to a 45° pitched roof (this is based on the item having a 100mm internal leg length)

Fascia Profile - SF3 - 3 Bends



Please note that the girth is the entire width of the aluminium including all bends. Images shown are indicative only.

3000mm Length Inc Union

Code PPC	Description
SF3/200/3MPPC	Fascia, 3 Bend, 0-200mm, 3000mm length
SF3/300/3MPPC	Fascia, 3 Bend, 200-300mm, 3000mm length
SF3/400/3MPPC	Fascia, 3 Bend, 300-400mm, 3000mm length
SF3/500/3MPPC	Fascia, 3 Bend, 400-500mm, 3000mm length
SF3/600/3MPPC	Fascia, 3 Bend, 500-600mm, 3000mm length
SF3/700/3MPPC	Fascia, 3 Bend, 600-700mm, 3000mm length
SF3/800/3MPPC	Fascia, 3 Bend, 700-800mm, 3000mm length
SF3/900/3MPPC	Fascia, 3 Bend, 800-900mm, 3000mm length
SF3/1000/3MPPC	Fascia, 3 Bend, 900-1000mm, 3000mm length

Loose Union

Code PPC	Description
SF3/200/UCPPC	Fascia, 3 Bend, 0-200mm, Union Clip
SF3/300/UCPPC	Fascia, 3 Bend, 200-300mm, Union Clip
SF3/400/UCPPC	Fascia, 3 Bend, 300-400mm, Union Clip
SF3/500/UCPPC	Fascia, 3 Bend, 400-500mm, Union Clip
SF3/600/UCPPC	Fascia, 3 Bend, 500-600mm, Union Clip
SF3/700/UCPPC	Fascia, 3 Bend, 600-700mm, Union Clip
SF3/800/UCPPC	Fascia, 3 Bend, 700-800mm, Union Clip
SF3/900/UCPPC	Fascia, 3 Bend, 800-900mm, Union Clip
SF3/1000/UCPPC	Fascia, 3 Bend, 900-1000mm, Union Clip

Fascia Corner - SF3 (External/Internal) Angle TBC at point of order

Code PPC	Description
SF3/200/EXTPPC	Fascia External Corner, 3 Bend, 0-200mm

SF3/300/EXTPPC	Fascia External Corner, 3 Bend, 200-300mm
SF3/400/EXTPPC	Fascia External Corner, 3 Bend, 300-400mm
SF3/500/EXTPPC	Fascia External Corner, 3 Bend, 400-500mm
SF3/600/EXTPPC	Fascia External Corner, 3 Bend, 500-600mm
SF3/700/EXTPPC	Fascia External Corner, 3 Bend, 600-700mm
SF3/800/EXTPPC	Fascia External Corner, 3 Bend, 700-800mm
SF3/900/EXTPPC	Fascia External Corner, 3 Bend, 800-900mm
SF3/1000/EXTPPC	Fascia External Corner, 3 Bend, 900-1000mm
SF3/200/INTPPC	Fascia Internal Corner, 3 Bend, 0-200mm
SF3/300/INTPPC	Fascia Internal Corner, 3 Bend, 200-300mm
SF3/400/INTPPC	Fascia Internal Corner, 3 Bend, 300-400mm
SF3/500/INTPPC	Fascia Internal Corner, 3 Bend, 400-500mm
SF3/600/INTPPC	Fascia Internal Corner, 3 Bend, 500-600mm
SF3/700/INTPPC	Fascia Internal Corner, 3 Bend, 600-700mm
SF3/800/INTPPC	Fascia Internal Corner, 3 Bend, 700-800mm
SF3/900/INTPPC	Fascia Internal Corner, 3 Bend, 800-900mm
SF3/1000/INTPPC	Fascia Internal Corner, 3 Bend, 900-1000mm

Stop End

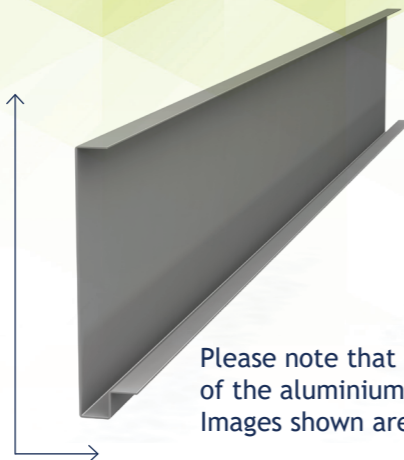
Code PPC	Description
FSC/200/SENDPPC	Fascia Stop End, 0-200mm
FSC/300/SENDPPC	Fascia Stop End, 200-300mm
FSC/400/SENDPPC	Fascia Stop End, 300-400mm
FSC/500/SENDPPC	Fascia Stop End, 400-500mm
FSC/600/SENDPPC	Fascia Stop End, 500-600mm
FSC/700/SENDPPC	Fascia Stop End, 600-700mm
FSC/800/SENDPPC	Fascia Stop End, 700-800mm
FSC/900/SENDPPC	Fascia Stop End, 800-900mm
FSC/1000/SENDPPC	Fascia Stop End, 900-1000mm

Apex/Raking Angles

Code PPC	Description
SF3/200/APAPPC	Fascia Apex, 3 Bnd, 0-200mm
SF3/300/APAPPC	Fascia Apex, 3 Bnd, 200-300mm
SF3/400/APAPPC	Fascia Apex, 3 Bnd, 300-400mm
SF3/500/APAPPC	Fascia Apex, 3 Bnd, 400-500mm
SF3/600/APAPPC	Fascia Apex, 3 Bnd, 500-600mm
SF3/700/APAPPC	Fascia Apex, 3 Bnd, 600-700mm
SF3/800/APAPPC	Fascia Apex, 3 Bnd, 700-800mm
SF3/900/APAPPC	Fascia Apex, 3 Bnd, 800-900mm
SF3/1000/APAPPC	Fascia Apex, 3 Bnd, 900-1000mm

At 90° this covers for anything up to a 45° pitched roof (this is based on the item having a 100mm internal leg length)

Fascia Profile - SF4 - 4 Bends



Please note that the girth is the entire width of the aluminium including all bends. Images shown are indicative only.

3000mm Length Inc Union

Code PPC	Description
SF4/200/3MPPC	Fascia, 4 Bend, 0-200mm, 3000mm length
SF4/300/3MPPC	Fascia, 4 Bend, 200-300mm, 3000mm length
SF4/400/3MPPC	Fascia, 4 Bend, 300-400mm, 3000mm length
SF4/500/3MPPC	Fascia, 4 Bend, 400-500mm, 3000mm length
SF4/600/3MPPC	Fascia, 4 Bend, 500-600mm, 3000mm length
SF4/700/3MPPC	Fascia, 4 Bend, 600-700mm, 3000mm length
SF4/800/3MPPC	Fascia, 4 Bend, 700-800mm, 3000mm length
SF4/900/3MPPC	Fascia, 4 Bend, 800-900mm, 3000mm length
SF4/1000/3MPPC	Fascia, 4 Bend, 900-1000mm, 3000mm length

Loose Union

Code PPC	Description
SF4/200/UCPPC	Fascia, 4 Bend, 0-200mm, Union Clip
SF4/300/UCPPC	Fascia, 4 Bend, 200-300mm, Union Clip
SF4/400/UCPPC	Fascia, 4 Bend, 300-400mm, Union Clip
SF4/500/UCPPC	Fascia, 4 Bend, 400-500mm, Union Clip
SF4/600/UCPPC	Fascia, 4 Bend, 500-600mm, Union Clip
SF4/700/UCPPC	Fascia, 4 Bend, 600-700mm, Union Clip
SF4/800/UCPPC	Fascia, 4 Bend, 700-800mm, Union Clip
SF4/900/UCPPC	Fascia, 4 Bend, 800-900mm, Union Clip
SF4/1000/UCPPC	Fascia, 4 Bend, 900-1000mm, Union Clip

Fascia Corner - SF4 (External/Internal) Angle TBC at point of order

Code PPC	Description
SF4/200/EXTPPC	Fascia External Corner, 4 Bend, 0-200mm
SF4/300/EXTPPC	Fascia External Corner, 4 Bend, 200-300mm

SF4/400/EXTPPC	Fascia External Corner, 4 Bend, 300-400mm
SF4/500/EXTPPC	Fascia External Corner, 4 Bend, 400-500mm
SF4/600/EXTPPC	Fascia External Corner, 4 Bend, 500-600mm
SF4/700/EXTPPC	Fascia External Corner, 4 Bend, 600-700mm
SF4/800/EXTPPC	Fascia External Corner, 4 Bend, 700-800mm
SF4/900/EXTPPC	Fascia External Corner, 4 Bend, 800-900mm
SF4/1000/EXTPPC	Fascia External Corner, 4 Bend, 900-1000mm
SF4/200/INTPPC	Fascia Internal Corner, 4 Bend, 0-200mm
SF4/300/INTPPC	Fascia Internal Corner, 4 Bend, 200-300mm
SF4/400/INTPPC	Fascia Internal Corner, 4 Bend, 300-400mm
SF4/500/INTPPC	Fascia Internal Corner, 4 Bend, 400-500mm
SF4/600/INTPPC	Fascia Internal Corner, 4 Bend, 500-600mm
SF4/700/INTPPC	Fascia Internal Corner, 4 Bend, 600-700mm
SF4/800/INTPPC	Fascia Internal Corner, 4 Bend, 700-800mm
SF4/900/INTPPC	Fascia Internal Corner, 4 Bend, 800-900mm
SF4/1000/INTPPC	Fascia Internal Corner, 4 Bend, 900-1000mm

Stop End

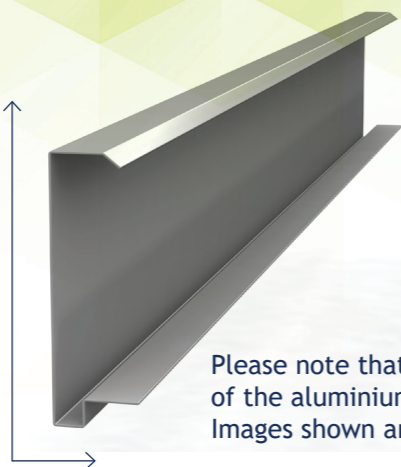
Code PPC	Description
FSC/200/SENDPPC	Fascia Stop End, 0-200mm
FSC/300/SENDPPC	Fascia Stop End, 200-300mm
FSC/400/SENDPPC	Fascia Stop End, 300-400mm
FSC/500/SENDPPC	Fascia Stop End, 400-500mm
FSC/600/SENDPPC	Fascia Stop End, 500-600mm
FSC/700/SENDPPC	Fascia Stop End, 600-700mm
FSC/800/SENDPPC	Fascia Stop End, 700-800mm
FSC/900/SENDPPC	Fascia Stop End, 800-900mm
FSC/1000/SENDPPC	Fascia Stop End, 900-1000mm

Apex/Raking Angles

Code PPC	Description
SF4/200/APAPPC	Fascia Apex, 4 Bnd, 0-200mm
SF4/300/APAPPC	Fascia Apex, 4 Bnd, 200-300mm
SF4/400/APAPPC	Fascia Apex, 4 Bnd, 300-400mm
SF4/500/APAPPC	Fascia Apex, 4 Bnd, 400-500mm
SF4/600/APAPPC	Fascia Apex, 4 Bnd, 500-600mm
SF4/700/APAPPC	Fascia Apex, 4 Bnd, 600-700mm
SF4/800/APAPPC	Fascia Apex, 4 Bnd, 700-800mm
SF4/900/APAPPC	Fascia Apex, 4 Bnd, 800-900mm
SF4/1000/APAPPC	Fascia Apex, 4 Bnd, 900-1000mm

At 90° this covers for anything up to a 45° pitched roof (this is based on the item having a 100mm internal leg length)

Fascia Profile - SF5 - 5 Bends



Please note that the girth is the entire width of the aluminium including all bends. Images shown are indicative only.

3000mm Length Inc Union

Code PPC	Description
SF5/200/3MPPC	Fascia, 5 Bend, 0-200mm, 3000mm length
SF5/300/3MPPC	Fascia, 5 Bend, 200-300mm, 3000mm length
SF5/400/3MPPC	Fascia, 5 Bend, 300-400mm, 3000mm length
SF5/500/3MPPC	Fascia, 5 Bend, 400-500mm, 3000mm length
SF5/600/3MPPC	Fascia, 5 Bend, 500-600mm, 3000mm length
SF5/700/3MPPC	Fascia, 5 Bend, 600-700mm, 3000mm length
SF5/800/3MPPC	Fascia, 5 Bend, 700-800mm, 3000mm length
SF5/900/3MPPC	Fascia, 5 Bend, 800-900mm, 3000mm length
SF5/1000/3MPPC	Fascia, 5 Bend, 900-1000mm, 3000mm length

Loose Union

Code PPC	Description
SF5/200/UCPPC	Fascia, 5 Bend, 0-200mm, Union Clip
SF5/300/UCPPC	Fascia, 5 Bend, 200-300mm, Union Clip
SF5/400/UCPPC	Fascia, 5 Bend, 300-400mm, Union Clip
SF5/500/UCPPC	Fascia, 5 Bend, 400-500mm, Union Clip
SF5/600/UCPPC	Fascia, 5 Bend, 500-600mm, Union Clip
SF5/700/UCPPC	Fascia, 5 Bend, 600-700mm, Union Clip
SF5/800/UCPPC	Fascia, 5 Bend, 700-800mm, Union Clip
SF5/900/UCPPC	Fascia, 5 Bend, 800-900mm, Union Clip
SF5/1000/UCPPC	Fascia, 5 Bend, 900-1000mm, Union Clip

Fascia Corner - SF5 (External/Internal) Angle TBC at point of order

Code PPC	Description
SF5/200/EXTPPC	Fascia External Corner, 5 Bend, 0-200mm

SF5/300/EXTPPC	Fascia External Corner, 5 Bend, 200-300mm
SF5/400/EXTPPC	Fascia External Corner, 5 Bend, 300-400mm
SF5/500/EXTPPC	Fascia External Corner, 5 Bend, 400-500mm
SF5/600/EXTPPC	Fascia External Corner, 5 Bend, 500-600mm
SF5/700/EXTPPC	Fascia External Corner, 5 Bend, 600-700mm
SF5/800/EXTPPC	Fascia External Corner, 5 Bend, 700-800mm
SF5/900/EXTPPC	Fascia External Corner, 5 Bend, 800-900mm
SF5/1000/EXTPPC	Fascia External Corner, 5 Bend, 900-1000mm
SF5/200/INTPPC	Fascia Internal Corner, 5 Bend, 0-200mm
SF5/300/INTPPC	Fascia Internal Corner, 5 Bend, 200-300mm
SF5/400/INTPPC	Fascia Internal Corner, 5 Bend, 300-400mm
SF5/500/INTPPC	Fascia Internal Corner, 5 Bend, 400-500mm
SF5/600/INTPPC	Fascia Internal Corner, 5 Bend, 500-600mm
SF5/700/INTPPC	Fascia Internal Corner, 5 Bend, 600-700mm
SF5/800/INTPPC	Fascia Internal Corner, 5 Bend, 700-800mm
SF5/900/INTPPC	Fascia Internal Corner, 5 Bend, 800-900mm
SF5/1000/INTPPC	Fascia Internal Corner, 5 Bend, 900-1000mm

Stop End

Code PPC	Description
FSC/200/SENDPPC	Fascia Stop End, 0-200mm
FSC/300/SENDPPC	Fascia Stop End, 200-300mm
FSC/400/SENDPPC	Fascia Stop End, 300-400mm
FSC/500/SENDPPC	Fascia Stop End, 400-500mm
FSC/600/SENDPPC	Fascia Stop End, 500-600mm
FSC/700/SENDPPC	Fascia Stop End, 600-700mm
FSC/800/SENDPPC	Fascia Stop End, 700-800mm
FSC/900/SENDPPC	Fascia Stop End, 800-900mm
FSC/1000/SENDPPC	Fascia Stop End, 900-1000mm

Apex/Raking Angles

Code PPC	Description
SF5/200/APAPP	Fascia Apex, 5 Bnd, 0-200mm
SF5/300/APAPP	Fascia Apex, 5 Bnd, 200-300mm
SF5/400/APAPP	Fascia Apex, 5 Bnd, 300-400mm
SF5/500/APAPP	Fascia Apex, 5 Bnd, 400-500mm
SF5/600/APAPP	Fascia Apex, 5 Bnd, 500-600mm
SF5/700/APAPP	Fascia Apex, 5 Bnd, 600-700mm
SF5/800/APAPP	Fascia Apex, 5 Bnd, 700-800mm
SF5/900/APAPP	Fascia Apex, 5 Bnd, 800-900mm
SF5/1000/APAPP	Fascia Apex, 5 Bnd, 900-1000mm

At 90° this covers for anything up to a 45° pitched roof (this is based on the item having a 100mm internal leg length)

Fascia Profile - SF6 - 6 Bends



Please note that the girth is the entire width of the aluminium including all bends. Images shown are indicative only.

3000mm Length Inc Union

Code PPC	Description
SF6/200/3MPPC	Fascia, 6 Bend, 0-200mm, 3000mm length
SF6/300/3MPPC	Fascia, 6 Bend, 200-300mm, 3000mm length
SF6/400/3MPPC	Fascia, 6 Bend, 300-400mm, 3000mm length
SF6/500/3MPPC	Fascia, 6 Bend, 400-500mm, 3000mm length
SF6/600/3MPPC	Fascia, 6 Bend, 500-600mm, 3000mm length
SF6/700/3MPPC	Fascia, 6 Bend, 600-700mm, 3000mm length
SF6/800/3MPPC	Fascia, 6 Bend, 700-800mm, 3000mm length
SF6/900/3MPPC	Fascia, 6 Bend, 800-900mm, 3000mm length
SF6/1000/3MPPC	Fascia, 6 Bend, 900-1000mm, 3000m length

Loose Union

Code PPC	Description
SF6/200/UCPPC	Fascia, 6 Bend, 0-200mm, Union Clip
SF6/300/UCPPC	Fascia, 6 Bend, 200-300mm, Union Clip
SF6/400/UCPPC	Fascia, 6 Bend, 300-400mm, Union Clip
SF6/500/UCPPC	Fascia, 6 Bend, 400-500mm, Union Clip
SF6/600/UCPPC	Fascia, 6 Bend, 500-600mm, Union Clip
SF6/700/UCPPC	Fascia, 6 Bend, 600-700mm, Union Clip
SF6/800/UCPPC	Fascia, 6 Bend, 700-800mm, Union Clip
SF6/900/UCPPC	Fascia, 6 Bend, 800-900mm, Union Clip
SF6/1000/UCPPC	Fascia, 6 Bend, 900-1000mm, Union Clip

Fascia Corner - SF6 (External/Internal) Angle TBC at point of order

Code PPC	Description
SF6/200/EXTPPC	Fascia External Corner, 6 Bend, 0-200mm
SF6/300/EXTPPC	Fascia External Corner, 6 Bend, 200-300mm
SF6/400/EXTPPC	Fascia External Corner, 6 Bend, 300-400mm

SF6/500/EXTPPC	Fascia External Corner, 6 Bend, 400-500mm
SF6/600/EXTPPC	Fascia External Corner, 6 Bend, 500-600mm
SF6/700/EXTPPC	Fascia External Corner, 6 Bend, 600-700mm
SF6/800/EXTPPC	Fascia External Corner, 6 Bend, 700-800mm
SF6/900/EXTPPC	Fascia External Corner, 6 Bend, 800-900mm
SF6/1000/EXTPPC	Fascia External Corner, 6 Bend, 900-1000mm
SF6/200/INTPPC	Fascia Internal Corner, 6 Bend, 0-200mm
SF6/300/INTPPC	Fascia Internal Corner, 6 Bend, 200-300mm
SF6/400/INTPPC	Fascia Internal Corner, 6 Bend, 300-400mm
SF6/500/INTPPC	Fascia Internal Corner, 6 Bend, 400-500mm
SF6/600/INTPPC	Fascia Internal Corner, 6 Bend, 500-600mm
SF6/700/INTPPC	Fascia Internal Corner, 6 Bend, 600-700mm
SF6/800/INTPPC	Fascia Internal Corner, 6 Bend, 700-800mm
SF6/900/INTPPC	Fascia Internal Corner, 6 Bend, 800-900mm
SF6/1000/INTPPC	Fascia Internal Corner, 6 Bend, 900-1000mm

Stop End

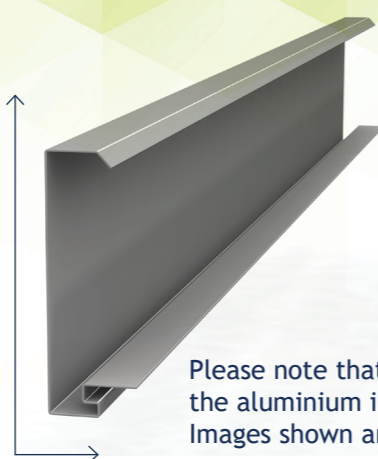
Code PPC	Description
FSC/200/SENDPPC	Fascia Stop End, 0-200mm
FSC/300/SENDPPC	Fascia Stop End, 200-300mm
FSC/400/SENDPPC	Fascia Stop End, 300-400mm
FSC/500/SENDPPC	Fascia Stop End, 400-500mm
FSC/600/SENDPPC	Fascia Stop End, 500-600mm
FSC/700/SENDPPC	Fascia Stop End, 600-700mm
FSC/800/SENDPPC	Fascia Stop End, 700-800mm
FSC/900/SENDPPC	Fascia Stop End, 800-900mm
FSC/1000/SENDPPC	Fascia Stop End, 900-1000mm

Apex/Raking Angles

Code PPC	Description
SF6/200/APAPP	Fascia Apex, 6 Bnd, 0-200mm
SF6/300/APAPP	Fascia Apex, 6 Bnd, 200-300mm
SF6/400/APAPP	Fascia Apex, 6 Bnd, 300-400mm
SF6/500/APAPP	Fascia Apex, 6 Bnd, 400-500mm
SF6/600/APAPP	Fascia Apex, 6 Bnd, 500-600mm
SF6/700/APAPP	Fascia Apex, 6 Bnd, 600-700mm
SF6/800/APAPP	Fascia Apex, 6 Bnd, 700-800mm
SF6/900/APAPP	Fascia Apex, 6 Bnd, 800-900mm
SF6/1000/APAPP	Fascia Apex, 6 Bnd, 900-1000mm

At 90° this covers for anything up to a 45° pitched roof (this is based on the item having a 100mm internal leg length)

Fascia Profile - SF7 - 7 Bends



Please note that the girth is the entire width of the aluminium including all bends. Images shown are indicative only.

3000mm Length Inc Union

Code PPC	Description
SF7/200/3MPPC	Fascia, 7 Bend, 0-200mm, 3000mm length
SF7/300/3MPPC	Fascia, 7 Bend, 200-300mm, 3000mm length
SF7/400/3MPPC	Fascia, 7 Bend, 300-400mm, 3000mm length
SF7/500/3MPPC	Fascia, 7 Bend, 400-500mm, 3000mm length
SF7/600/3MPPC	Fascia, 7 Bend, 500-600mm, 3000mm length
SF7/700/3MPPC	Fascia, 7 Bend, 600-700mm, 3000mm length
SF7/800/3MPPC	Fascia, 7 Bend, 700-800mm, 3000mm length
SF7/900/3MPPC	Fascia, 7 Bend, 800-900mm, 3000mm length
SF7/1000/3MPPC	Fascia, 7 Bend, 900-1000mm, 3000mm length

Loose Union

Code PPC	Description
SF7/200/UCPPC	Fascia, 7 Bend, 0-200mm, Union Clip
SF7/300/UCPPC	Fascia, 7 Bend, 200-300mm, Union Clip
SF7/400/UCPPC	Fascia, 7 Bend, 300-400mm, Union Clip
SF7/500/UCPPC	Fascia, 7 Bend, 400-500mm, Union Clip
SF7/600/UCPPC	Fascia, 7 Bend, 500-600mm, Union Clip
SF7/700/UCPPC	Fascia, 7 Bend, 600-700mm, Union Clip
SF7/800/UCPPC	Fascia, 7 Bend, 700-800mm, Union Clip
SF7/900/UCPPC	Fascia, 7 Bend, 800-900mm, Union Clip
SF7/1000/UCPPC	Fascia, 7 Bend, 900-1000mm, Union Clip

Fascia Corner - SF7 (External/Internal) Angle TBC at point of order

Code PPC	Description
SF7/200/EXTPPC	Fascia External Corner, 7 Bend, 0-200mm

SF7/300/EXTPPC	Fascia External Corner, 7 Bend, 200-300mm
SF7/400/EXTPPC	Fascia External Corner, 7 Bend, 300-400mm
SF7/500/EXTPPC	Fascia External Corner, 7 Bend, 400-500mm
SF7/600/EXTPPC	Fascia External Corner, 7 Bend, 500-600mm
SF7/700/EXTPPC	Fascia External Corner, 7 Bend, 600-700mm
SF7/800/EXTPPC	Fascia External Corner, 7 Bend, 700-800mm
SF7/900/EXTPPC	Fascia External Corner, 7 Bend, 800-900mm
SF7/1000/EXTPPC	Fascia External Corner, 7 Bend, 900-1000mm
SF7/200/INTPPC	Fascia Internal Corner, 7 Bend, 0-200mm
SF7/300/INTPPC	Fascia Internal Corner, 7 Bend, 200-300mm
SF7/400/INTPPC	Fascia Internal Corner, 7 Bend, 300-400mm
SF7/500/INTPPC	Fascia Internal Corner, 7 Bend, 400-500mm
SF7/600/INTPPC	Fascia Internal Corner, 7 Bend, 500-600mm
SF7/700/INTPPC	Fascia Internal Corner, 7 Bend, 600-700mm
SF7/800/INTPPC	Fascia Internal Corner, 7 Bend, 700-800mm
SF7/900/INTPPC	Fascia Internal Corner, 7 Bend, 800-900mm
SF7/1000/INTPPC	Fascia Internal Corner, 7 Bend, 900-1000mm

Stop End

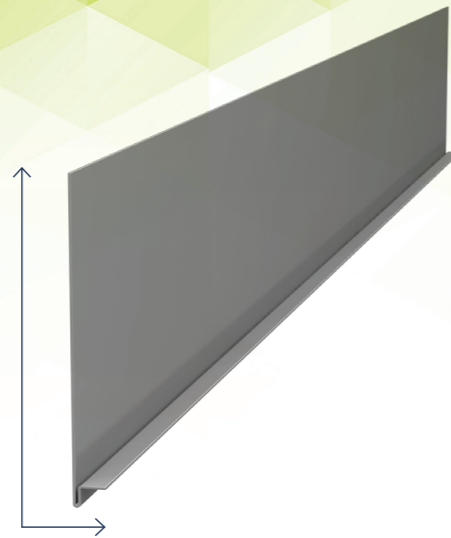
Code PPC	Description
FSC/200/SENDPPC	Fascia Stop End, 0-200mm
FSC/300/SENDPPC	Fascia Stop End, 200-300mm
FSC/400/SENDPPC	Fascia Stop End, 300-400mm
FSC/500/SENDPPC	Fascia Stop End, 400-500mm
FSC/600/SENDPPC	Fascia Stop End, 500-600mm
FSC/700/SENDPPC	Fascia Stop End, 600-700mm
FSC/800/SENDPPC	Fascia Stop End, 700-800mm
FSC/900/SENDPPC	Fascia Stop End, 800-900mm
FSC/1000/SENDPPC	Fascia Stop End, 900-1000mm

Apex/Raking Angles

Code PPC	Description
SF7/200/APAPP	Fascia Apex, 7 Bnd, 0-200mm
SF7/300/APAPP	Fascia Apex, 7 Bnd, 200-300mm
SF7/400/APAPP	Fascia Apex, 7 Bnd, 300-400mm
SF7/500/APAPP	Fascia Apex, 7 Bnd, 400-500mm
SF7/600/APAPP	Fascia Apex, 7 Bnd, 500-600mm
SF7/700/APAPP	Fascia Apex, 7 Bnd, 600-700mm
SF7/800/APAPP	Fascia Apex, 7 Bnd, 700-800mm
SF7/900/APAPP	Fascia Apex, 7 Bnd, 800-900mm
SF7/1000/APAPP	Fascia Apex, 7 Bnd, 900-1000mm

At 90° this covers for anything up to a 45° pitched roof (this is based on the item having a 100mm internal leg length)

Fascia Profile - SAFE02



Please note that the girth is the entire width of the aluminium including all bends. Images shown are indicative only.

3000mm Length Inc Union

Code PPC	Description
SAFE02/200/3MPPC	Fascia, Safe Edge Profile, 0-200mm, 3000mm length
SAFE02/300/3MPPC	Fascia, Safe Edge Profile, 200-300mm, 3000mm length
SAFE02/400/3MPPC	Fascia, Safe Edge Profile, 300-400mm, 3000mm length
SAFE02/500/3MPPC	Fascia, Safe Edge Profile, 400-500mm, 3000mm length
SAFE02/600/3MPPC	Fascia, Safe Edge Profile, 500-600mm, 3000mm length
SAFE02/700/3MPPC	Fascia, Safe Edge Profile, 600-700mm, 3000mm length
SAFE02/800/3MPPC	Fascia, Safe Edge Profile, 700-800mm, 3000mm length
SAFE02/900/3MPPC	Fascia, Safe Edge Profile, 800-900mm, 3000mm length
SAFE02/1000/3MPPC	Fascia, Safe Edge Profile, 900-1000mm, 3000mm length

Loose Union

Code PPC	Description
SAFE02/200/UCPPC	Fascia, Safe Edge Profile, 0-200mm, Union Clip
SAFE02/300/UCPPC	Fascia, Safe Edge Profile, 200-300mm, Union Clip
SAFE02/400/UCPPC	Fascia, Safe Edge Profile, 300-400mm, Union Clip
SAFE02/500/UCPPC	Fascia, Safe Edge Profile, 400-500mm, Union Clip
SAFE02/600/UCPPC	Fascia, Safe Edge Profile, 500-600mm, Union Clip
SAFE02/700/UCPPC	Fascia, Safe Edge Profile, 600-700mm, Union Clip
SAFE02/800/UCPPC	Fascia, Safe Edge Profile, 700-800mm, Union Clip
SAFE02/900/UCPPC	Fascia, Safe Edge Profile, 800-900mm, Union Clip
SAFE02/1000/UCPPC	Fascia, Safe Edge Profile, 900-1000mm, Union Clip

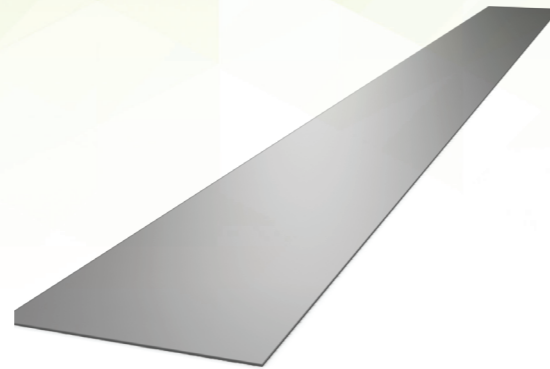
Fascia Corner - SAFE02 (External/Internal 90°)

Code PPC	Description
SAFE02/200/EXTPPC	Fascia External Corner, Safe Edge Profile, 0-200mm
SAFE02/300/EXTPPC	Fascia External Corner, Safe Edge Profile, 200-300mm
SAFE02/400/EXTPPC	Fascia External Corner, Safe Edge Profile, 300-400mm
SAFE02/500/EXTPPC	Fascia External Corner, Safe Edge Profile, 400-500mm
SAFE02/600/EXTPPC	Fascia External Corner, Safe Edge Profile, 500-600mm
SAFE02/700/EXTPPC	Fascia External Corner, Safe Edge Profile, 600-700mm
SAFE02/800/EXTPPC	Fascia External Corner, Safe Edge Profile, 700-800mm
SAFE02/900/EXTPPC	Fascia External Corner, Safe Edge Profile, 800-900mm
SAFE02/1000/EXTPPC	Fascia External Corner, Safe Edge Profile, 900-1000mm
SAFE02/200/INTPPC	Fascia Internal Corner, Safe Edge Profile, 0-200mm
SAFE02/300/INTPPC	Fascia Internal Corner, Safe Edge Profile, 200-300mm
SAFE02/400/INTPPC	Fascia Internal Corner, Safe Edge Profile, 300-400mm
SAFE02/500/INTPPC	Fascia Internal Corner, Safe Edge Profile, 400-500mm
SAFE02/600/INTPPC	Fascia Internal Corner, Safe Edge Profile, 500-600mm
SAFE02/700/INTPPC	Fascia Internal Corner, Safe Edge Profile, 600-700mm
SAFE02/800/INTPPC	Fascia Internal Corner, Safe Edge Profile, 700-800mm
SAFE02/900/INTPPC	Fascia Internal Corner, Safe Edge Profile, 800-900mm
SAFE02/1000/INTPPC	Fascia Internal Corner, Safe Edge Profile, 900-1000mm

Stop End

Code PPC	Description
FSC/200/SENDPPC	Fascia Stop End, 0-200mm
FSC/300/SENDPPC	Fascia Stop End, 200-300mm
FSC/400/SENDPPC	Fascia Stop End, 300-400mm
FSC/500/SENDPPC	Fascia Stop End, 400-500mm
FSC/600/SENDPPC	Fascia Stop End, 500-600mm
FSC/700/SENDPPC	Fascia Stop End, 600-700mm
FSC/800/SENDPPC	Fascia Stop End, 700-800mm
FSC/900/SENDPPC	Fascia Stop End, 800-900mm
FSC/1000/SENDPPC	Fascia Stop End, 900-1000mm

Soffit Profile - SOF0



Please note that the girth is the entire width of the aluminium including all bends. Images shown are indicative only.

Soffit Corner - SOF0 (Angle TBC at point of order)

Code PPC	Description
SOF0/200/CNRPPC	Soffit Corner, 0-200mm
SOF0/300/CNRPPC	Soffit Corner, 200-300mm
SOF0/400/CNRPPC	Soffit Corner, 300-400mm
SOF0/500/CNRPPC	Soffit Corner, 400-500mm
SOF0/600/CNRPPC	Soffit Corner, 500-600mm
SOF0/700/CNRPPC	Soffit Corner, 600-700mm
SOF0/800/CNRPPC	Soffit Corner, 700-800mm
SOF0/900/CNRPPC	Soffit Corner, 800-900mm
SOF0/1000/CNRPPC	Soffit Corner, 900-1000mm

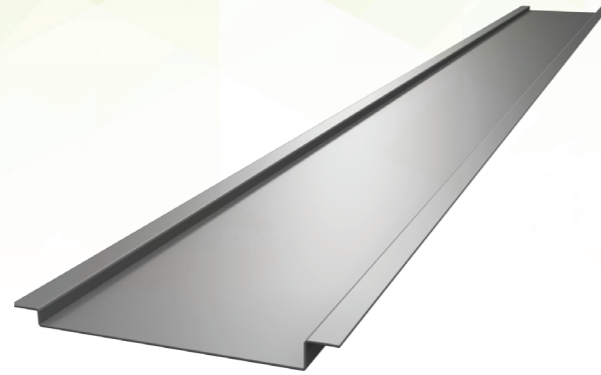
3000mm Length Inc Union

Code PPC	Description
SOF0/200/3MPPC	Soffit, 0-200mm, 3000mm length
SOF0/300/3MPPC	Soffit, 200-300mm, 3000mm length
SOF0/400/3MPPC	Soffit, 300-400mm, 3000mm length
SOF0/500/3MPPC	Soffit, 400-500mm, 3000mm length
SOF0/600/3MPPC	Soffit, 500-600mm, 3000mm length
SOF0/700/3MPPC	Soffit, 600-700mm, 3000mm length
SOF0/800/3MPPC	Soffit, 700-800mm, 3000mm length
SOF0/900/3MPPC	Soffit, 800-900mm, 3000mm length
SOF0/1000/3MPPC	Soffit, 900-1000mm, 3000mm length

Loose Union

Code PPC	Description
SOF0/200/UCPPC	Soffit, 0-200mm, Union Clip
SOF0/300/UCPPC	Soffit, 200-300mm, Union Clip
SOF0/400/UCPPC	Soffit, 300-400mm, Union Clip
SOF0/500/UCPPC	Soffit, 400-500mm, Union Clip
SOF0/600/UCPPC	Soffit, 500-600mm, Union Clip
SOF0/700/UCPPC	Soffit, 600-700mm, Union Clip
SOF0/800/UCPPC	Soffit, 700-800mm, Union Clip
SOF0/900/UCPPC	Soffit, 800-900mm, Union Clip
SOF0/1000/UCPPC	Soffit, 900-1000mm, Union Clip

Soffit Profile - SOF4



Please note that the girth is the entire width of the aluminium including all bends. Images shown are indicative only.

Soffit Corner - SOF4 (Angle TBC at point of order)

Code PPC	Description
SOF4/200/CNRPPC	Soffit Corner, 4 Bend, 0-200mm
SOF4/300/CNRPPC	Soffit Corner, 4 Bend, 200-300mm
SOF4/400/CNRPPC	Soffit Corner, 4 Bend, 300-400mm
SOF4/500/CNRPPC	Soffit Corner, 4 Bend, 400-500mm
SOF4/600/CNRPPC	Soffit Corner, 4 Bend, 500-600mm
SOF4/700/CNRPPC	Soffit Corner, 4 Bend, 600-700mm
SOF4/800/CNRPPC	Soffit Corner, 4 Bend, 700-800mm
SOF4/900/CNRPPC	Soffit Corner, 4 Bend, 800-900mm
SOF4/1000/CNRPPC	Soffit Corner, 4 Bend, 900-1000mm

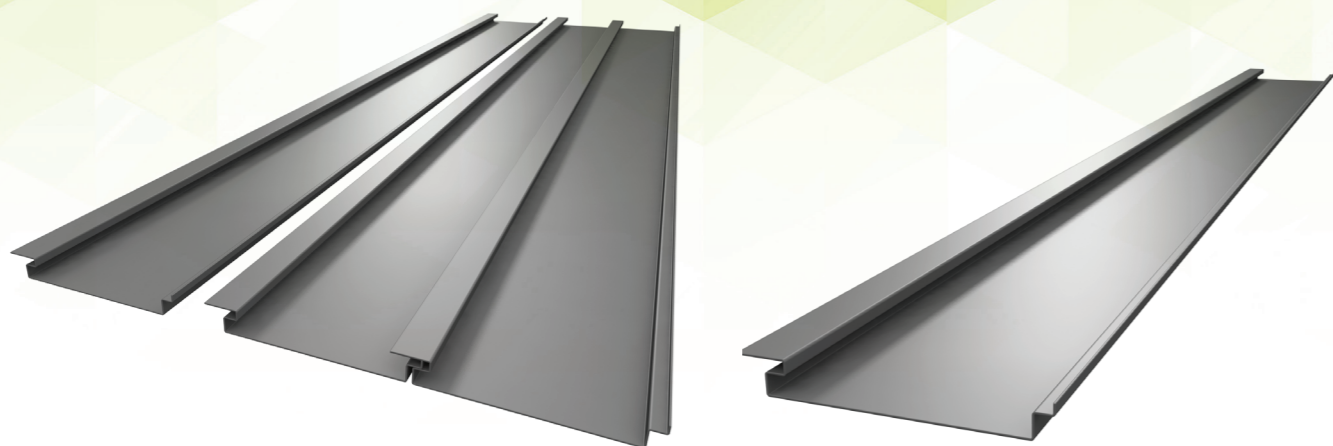
3000mm Length Inc Union

Code PPC	Description
SOF4/200/3MPPC	Soffit, 4 Bend, 0-200mm, 3000mm length
SOF4/300/3MPPC	Soffit, 4 Bend, 200-300mm, 3000mm length
SOF4/400/3MPPC	Soffit, 4 Bend, 300-400mm, 3000mm length
SOF4/500/3MPPC	Soffit, 4 Bend, 400-500mm, 3000mm length
SOF4/600/3MPPC	Soffit, 4 Bend, 500-600mm, 3000mm length
SOF4/700/3MPPC	Soffit, 4 Bend, 600-700mm, 3000mm length
SOF4/800/3MPPC	Soffit, 4 Bend, 700-800mm, 3000mm length
SOF4/900/3MPPC	Soffit, 4 Bend, 800-900mm, 3000mm length
SOF4/1000/3MPPC	Soffit, 4 Bend, 900-1000mm, 3000mm length

Loose Union

Code PPC	Description
SOF4/200/UCPPC	Soffit, 4 Bend, 0-200mm, Union Clip
SOF4/300/UCPPC	Soffit, 4 Bend, 200-300mm, Union Clip
SOF4/400/UCPPC	Soffit, 4 Bend, 300-400mm, Union Clip
SOF4/500/UCPPC	Soffit, 4 Bend, 400-500mm, Union Clip
SOF4/600/UCPPC	Soffit, 4 Bend, 500-600mm, Union Clip
SOF4/700/UCPPC	Soffit, 4 Bend, 600-700mm, Union Clip
SOF4/800/UCPPC	Soffit, 4 Bend, 700-800mm, Union Clip
SOF4/900/UCPPC	Soffit, 4 Bend, 800-900mm, Union Clip
SOF4/1000/UCPPC	Soffit, 4 Bend, 900-1000mm, Union Clip

Soffit Profile - SOF7



Please note that the girth is the width of the folded panel. Images shown are indicative only.

3000mm Length Inc Union

Code PPC	Description
SOF7/25/150/3MPPC	Soffit, 7 Bend, 25mm Deep, 150mm, 3000mm length
SOF7/25/300/3MPPC	Soffit, 7 Bend, 25mm Deep, 300mm, 3000mm length
SOF7/25/450/3MPPC	Soffit, 7 Bend, 25mm Deep, 450mm, 3000mm length
SOF7/25/500/3MPPC	Soffit, 7 Bend, 25mm Deep, 500mm, 3000mm length
SOF7/25/600/3MPPC	Soffit, 7 Bend, 25mm Deep, 600mm, 3000mm length
SOF7/35/150/3MPPC	Soffit, 7 Bend, 35mm Deep, 150mm, 3000mm length
SOF7/35/300/3MPPC	Soffit, 7 Bend, 35mm Deep, 300mm, 3000mm length
SOF7/35/450/3MPPC	Soffit, 7 Bend, 35mm Deep, 450mm, 3000mm length
SOF7/35/500/3MPPC	Soffit, 7 Bend, 35mm Deep, 500mm, 3000mm length
SOF7/35/600/3MPPC	Soffit, 7 Bend, 35mm Deep, 600mm, 3000mm length

Soffit Corner - SOF7 (Angle TBC at point of order - External)

Code PPC	Description
SOF7/25/150/INTPPC	Soffit Internal Corner, 7 Bend, 25mm Deep, 150mm
SOF7/25/300/INTPPC	Soffit Internal Corner, 7 Bend, 25mm Deep, 300mm
SOF7/25/450/INTPPC	Soffit Internal Corner, 7 Bend, 25mm Deep, 450mm
SOF7/25/500/INTPPC	Soffit Internal Corner, 7 Bend, 25mm Deep, 500mm
SOF7/25/600/INTPPC	Soffit Internal Corner, 7 Bend, 25mm Deep, 600mm
SOF7/35/150/INTPPC	Soffit Internal Corner, 7 Bend, 35mm Deep, 150mm
SOF7/35/300/INTPPC	Soffit Internal Corner, 7 Bend, 35mm Deep, 300mm
SOF7/35/450/INTPPC	Soffit Internal Corner, 7 Bend, 35mm Deep, 450mm
SOF7/35/500/INTPPC	Soffit Internal Corner, 7 Bend, 35mm Deep, 500mm
SOF7/35/600/INTPPC	Soffit Internal Corner, 7 Bend, 35mm Deep, 600mm

Soffit Corner - SOF7 (Angle TBC at point of order - Internal)

Code PPC	Description
SOF7/25/150/EXTPPC	Soffit External Corner, 7 Bend, 25mm Deep, 150mm
SOF7/25/300/EXTPPC	Soffit External Corner, 7 Bend, 25mm Deep, 300mm
SOF7/25/450/EXTPPC	Soffit External Corner, 7 Bend, 25mm Deep, 450mm
SOF7/25/500/EXTPPC	Soffit External Corner, 7 Bend, 25mm Deep, 500mm
SOF7/25/600/EXTPPC	Soffit External Corner, 7 Bend, 25mm Deep, 600mm
SOF7/35/150/EXTPPC	Soffit External Corner, 7 Bend, 35mm Deep, 150mm
SOF7/35/300/EXTPPC	Soffit External Corner, 7 Bend, 35mm Deep, 300mm
SOF7/35/450/EXTPPC	Soffit External Corner, 7 Bend, 35mm Deep, 450mm
SOF7/35/500/EXTPPC	Soffit External Corner, 7 Bend, 35mm Deep, 500mm
SOF7/35/600/EXTPPC	Soffit External Corner, 7 Bend, 35mm Deep, 600mm



Technical Support
+44 (0)1536 383 810

technical@alumascwms.co.uk

Customer Services
+44 (0)1536 383 810

customerservices@alumascwms.co.uk



www.alumascwms.co.uk

AWMS - BURTON LATIMER

Station Road
Burton Latimer
Kettering
Northamptonshire
NN15 5JP

+44 (0)1536 383 810
info@alumascwms.co.uk